

CATARAQUI RIDGE

267 THE PARKWAY

PRICE:

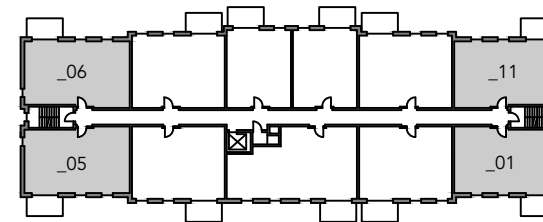
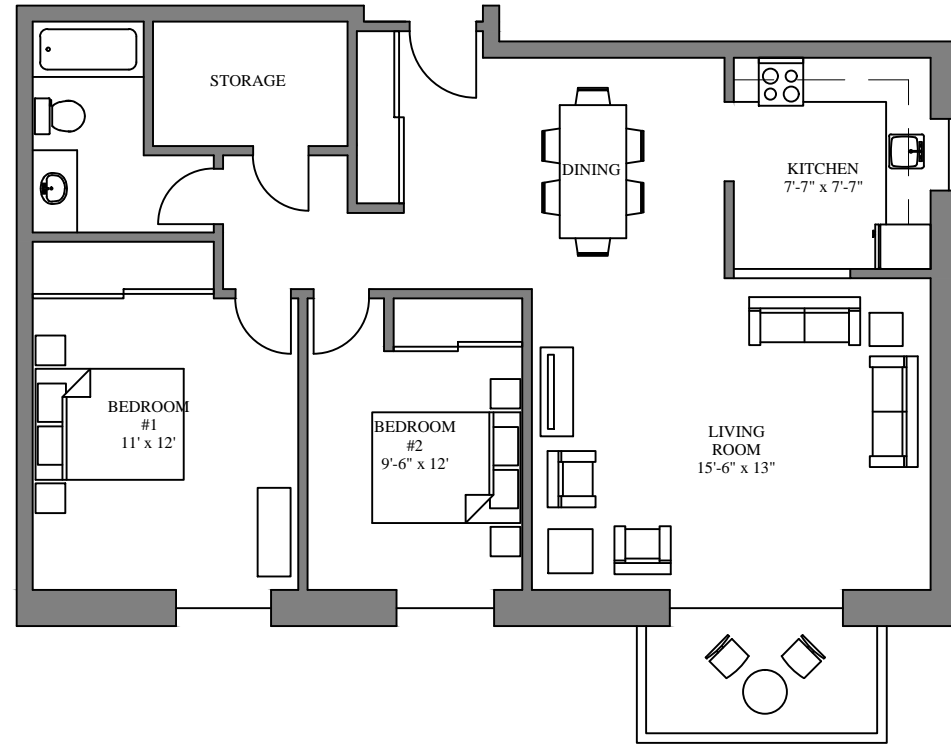
AVAILABLE:



WWW.CJMPROPERTY.CA

THE CREEKVIEW SUITE 900 sqft

Plans, dimension and actual usable floor space are approximate and may vary. Some suites may be a mirror image (reversed) from the brochure. Subject to errors and omissions excepted.



TYPICAL FLOOR PLAN
FLOOR 2 THROUGH 6

SUITE FEATURES

- 2 Bedroom + 1 bath
- Heat, water & electricity included
- Parking space included
- In-suite storage
- Private balcony
- Pet friendly
- New Elevator
- Laundry Facilities
- Wheelchair accessible

APPLICATION

- 1-year lease
- First & last month's rent (certified cheque, money order or bank draft)
- Current address & landlord info
- Current employment and verification of income
- Vehicle information
- Pet information
- One personal reference
- One emergency contact

To apply for one of our suites, contact:

Ashley Blommestyn, Rental Agent
ashley@caraco.ca
(613) 546-6277 | CELL: (613) 536-8280



Full-time On-site Superintendent (613) 876-4031

CATARAQUI RIDGE

267 THE PARKWAY

PRICE:

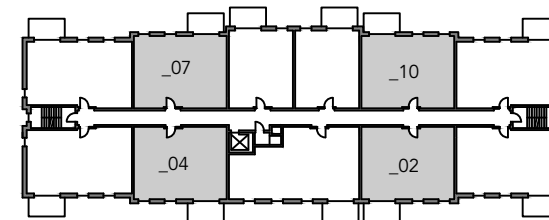
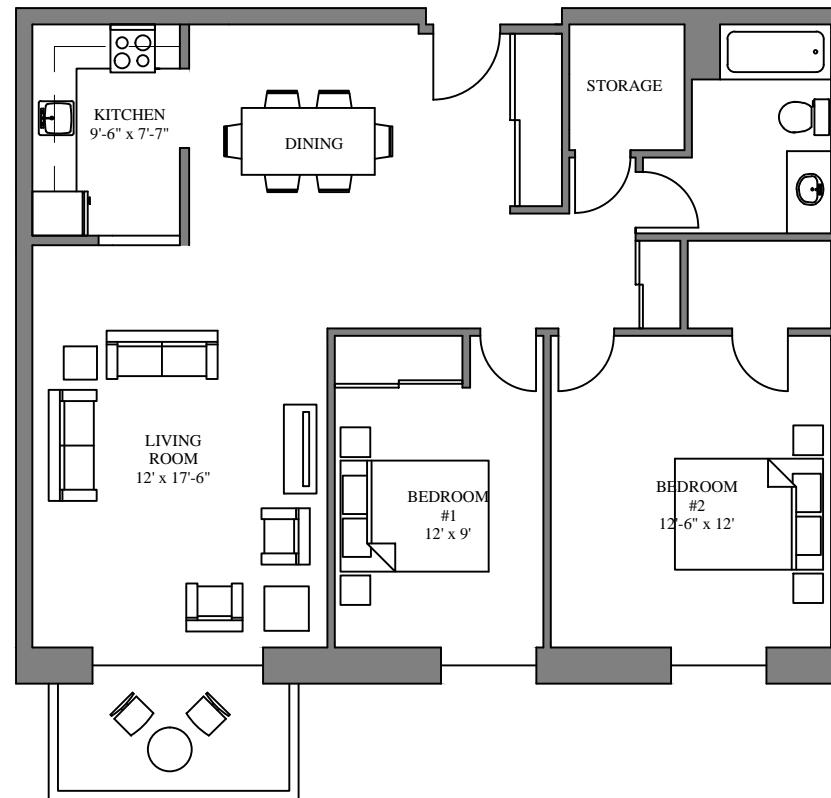
AVAILABLE:



WWW.CJMPROPERTY.CA

THE MEADOWBROOK SUITE 850 sqft

Plans, dimension and actual usable floor space are approximate and may vary. Some suites may be a mirror image (reversed) from the brochure. Subject to errors and omissions excepted.



TYPICAL FLOOR PLAN
FLOOR 2 THROUGH 6

SUITE FEATURES

- 2 Bedroom + 1 bath
- Heat, water & electricity included
- Parking space included
- In-suite storage
- Private balcony
- Pet friendly
- New Elevator
- Laundry Facilities
- Wheelchair accessible

APPLICATION

- 1-year lease
- First & last month's rent (certified cheque, money order or bank draft)
- Current address & landlord info
- Current employment and verification of income
- Vehicle information
- Pet information
- One personal reference
- One emergency contact

To apply for one of our suites, contact:

Ashley Blommestyn, Rental Agent
ashley@caraco.ca
(613) 546-6277 | CELL: (613) 536-8280



Full-time On-site Superintendent (613) 876-4031

CATARAQUI RIDGE

267 THE PARKWAY

PRICE:

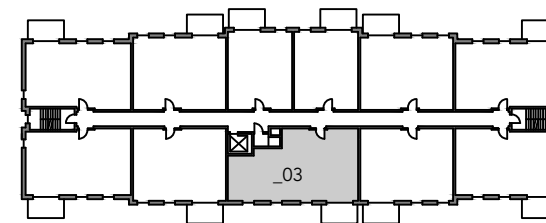
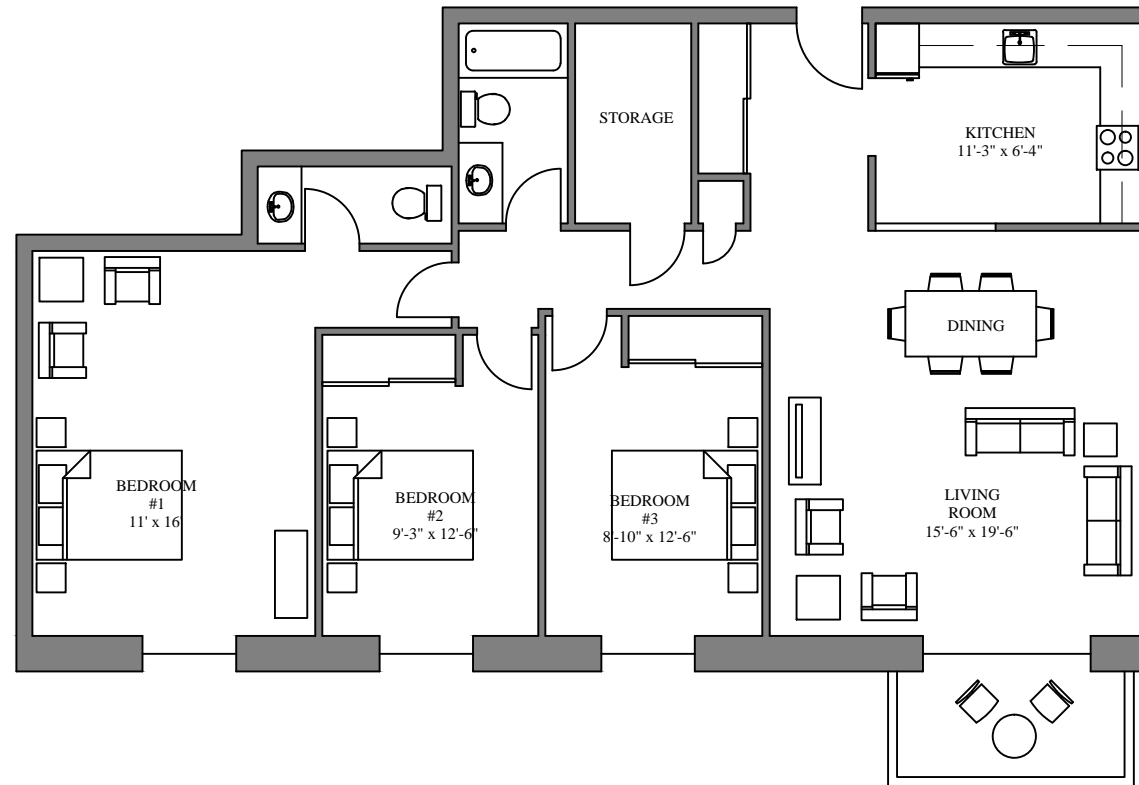
AVAILABLE:



WWW.CJMPROPERTY.CA

THE RIVERMEADE SUITE 1,100 sqft

Plans, dimension and actual usable floor space are approximate and may vary. Some suites may be a mirror image (reversed) from the brochure. Subject to errors and omissions excepted.



TYPICAL FLOOR PLAN
FLOOR 2 THROUGH 6

SUITE FEATURES

- 3 Bedroom + 1.5 bath
- Heat, water & electricity included
- Parking space included
- In-suite storage
- Private balcony
- Pet friendly
- New Elevator
- Laundry Facilities
- Wheelchair accessible

APPLICATION

- 1-year lease
- First & last month's rent (certified cheque, money order or bank draft)
- Current address & landlord info
- Current employment and verification of income
- Vehicle information
- Pet information
- One personal reference
- One emergency contact

To apply for one of our suites, contact:

Ashley Blommestyn, Rental Agent
ashley@caraco.ca
(613) 546-6277 | CELL: (613) 536-8280



Full-time On-site Superintendent (613) 876-4031

CATARAQUI RIDGE

267 THE PARKWAY

PRICE:

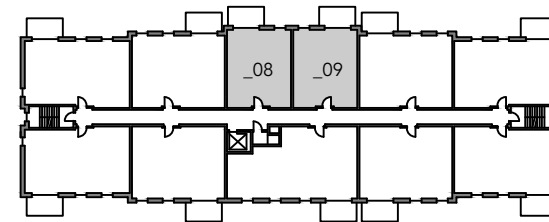
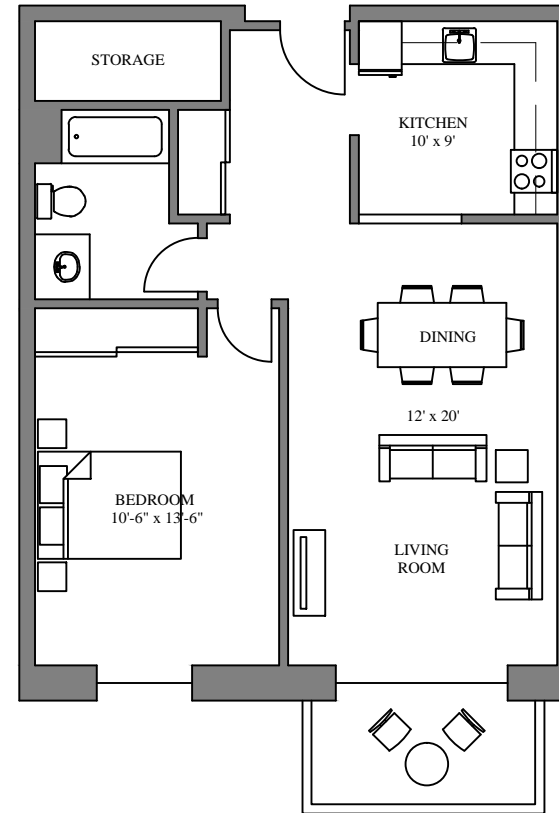
AVAILABLE:



WWW.CJMPROPERTY.CA

THE SUNNYSIDE SUITE 750 sqft

Plans, dimension and actual usable floor space are approximate and may vary. Some suites may be a mirror image (reversed) from the brochure. Subject to errors and omissions excepted.



TYPICAL FLOOR PLAN
FLOOR 2 THROUGH 6

SUITE FEATURES

- 1 Bedroom + 1 bath
- Heat, water & electricity included
- Parking space included
- In-suite storage
- Private balcony
- Pet friendly
- New Elevator
- Laundry Facilities
- Wheelchair accessible

APPLICATION

- 1-year lease
- First & last month's rent (certified cheque, money order or bank draft)
- Current address & landlord info
- Current employment and verification of income
- Vehicle information
- Pet information
- One personal reference
- One emergency contact

To apply for one of our suites, contact:

Ashley Blommestyn, Rental Agent
ashley@caraco.ca
(613) 546-6277 | CELL: (613) 536-8280



Full-time On-site Superintendent (613) 876-4031