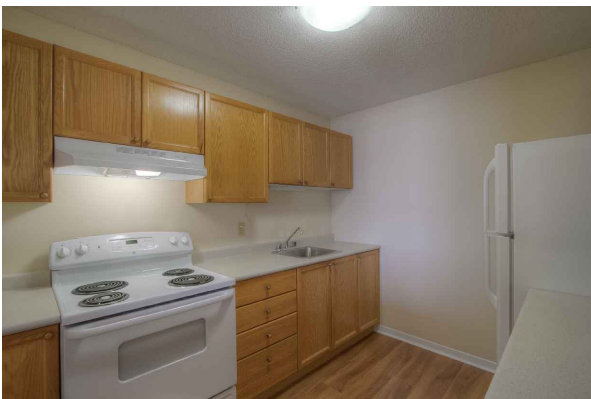


SUTTON MILLS

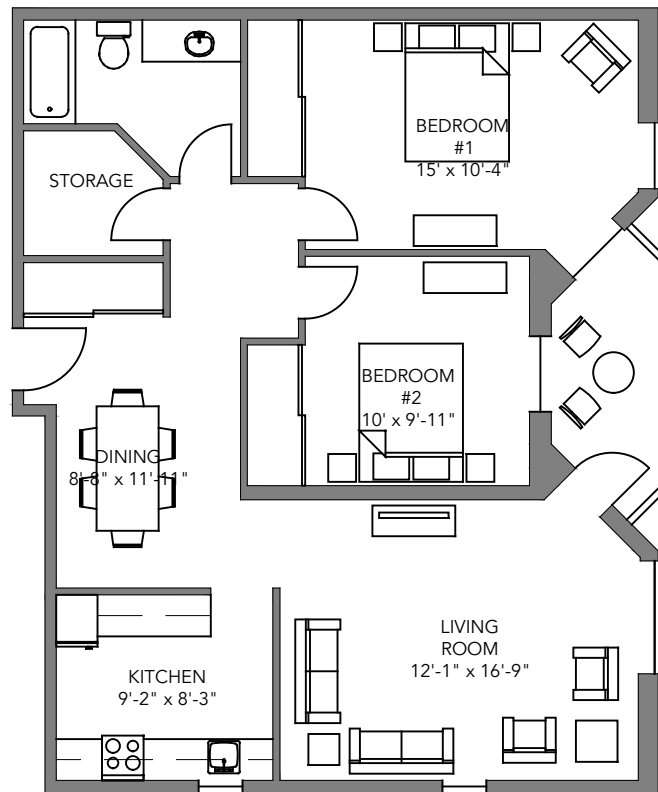
828 SUTTON MILLS COURT

PRICE:

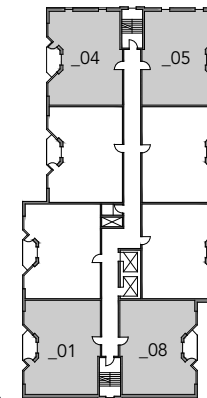
AVAILABLE:



WWW.CJMPROPERTY.NET



THE CHELSEA
850sqft



TYPICAL FLOOR PLAN
FLOOR 2 THROUGH 10

SUITE FEATURES

- 2 Bedroom + 1 Bath
- Heat, water & electricity included
- Parking space included
- In-suite storage
- Private balcony
- Pet friendly
- Elevator access
- Laundry Facilities
- Wheelchair accessible

APPLICATION

- 1-year lease
- First & last month's rent (certified cheque, money order, bank draft, or cash)
- Current address & landlord info
- Current employment and/or income
- Vehicle information
- Pet information
- One personal reference
- One emergency contact

To apply for one of our suites, contact:

Ashley Blommestyn, Rental Agent
ashley@caraco.net
(613) 546-6277 | CELL: (613) 536-8280



Plans, dimension and actual usable floor space are approximate and may vary. Some suites may be a mirror image (reversed) from the brochure. Subject to errors and omissions excepted.

Full-time On-site Superintendent (613) 530-3853

SUTTON MILLS

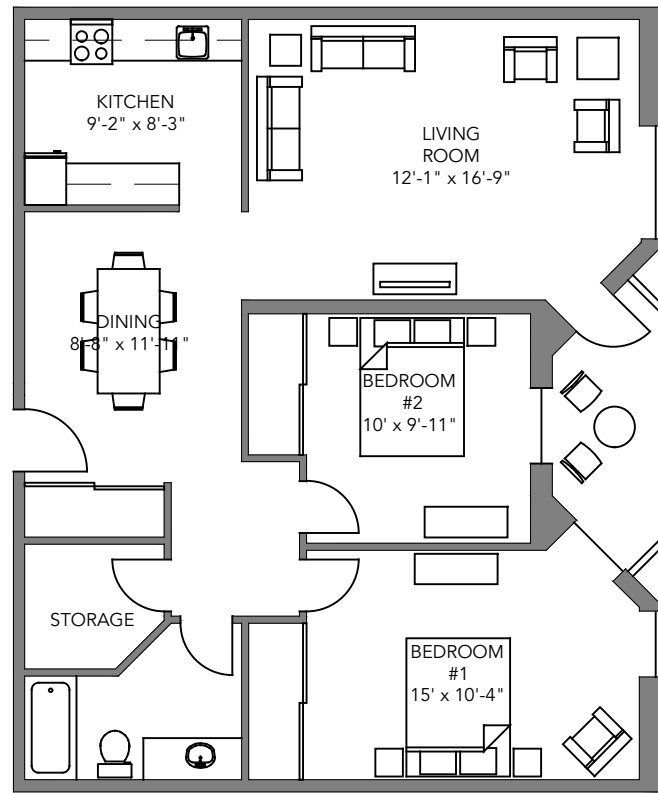
828 SUTTON MILLS COURT

PRICE:

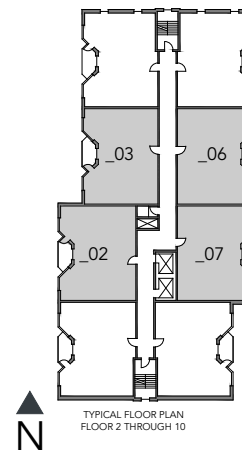
AVAILABLE:



WWW.CJMPROPERTY.NET



THE ASHLEY
850sqft



TYPICAL FLOOR PLAN
FLOOR 2 THROUGH 10

SUITE FEATURES

- 2 Bedroom + 1 Bath
- Heat, water & electricity included
- Parking space included
- In-suite storage
- Private balcony
- Pet friendly
- Elevator access
- Laundry Facilities
- Wheelchair accessible

APPLICATION

- 1-year lease
- First & last month's rent (certified cheque, money order, bank draft, or cash)
- Current address & landlord info
- Current employment and/or income
- Vehicle information
- Pet information
- One personal reference
- One emergency contact

To apply for one of our suites, contact:

Ashley Blommestyn, Rental Agent
ashley@caraco.net
(613) 546-6277 | CELL: (613) 536-8280



Full-time On-site Superintendent (613) 530-3853

Plans, dimension and actual usable floor space are approximate and may vary. Some suites may be a mirror image (reversed) from the brochure. Subject to errors and omissions excepted.